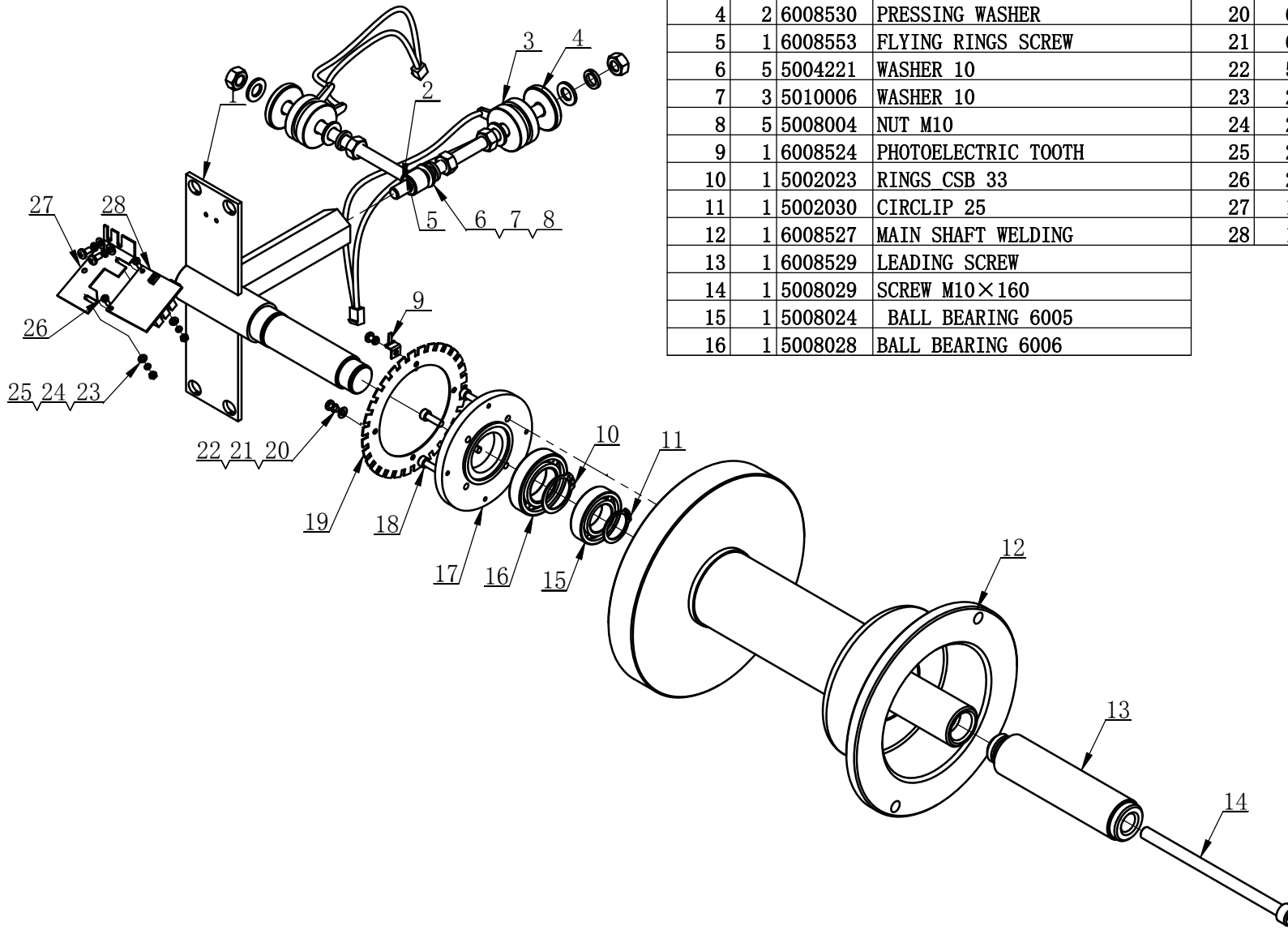


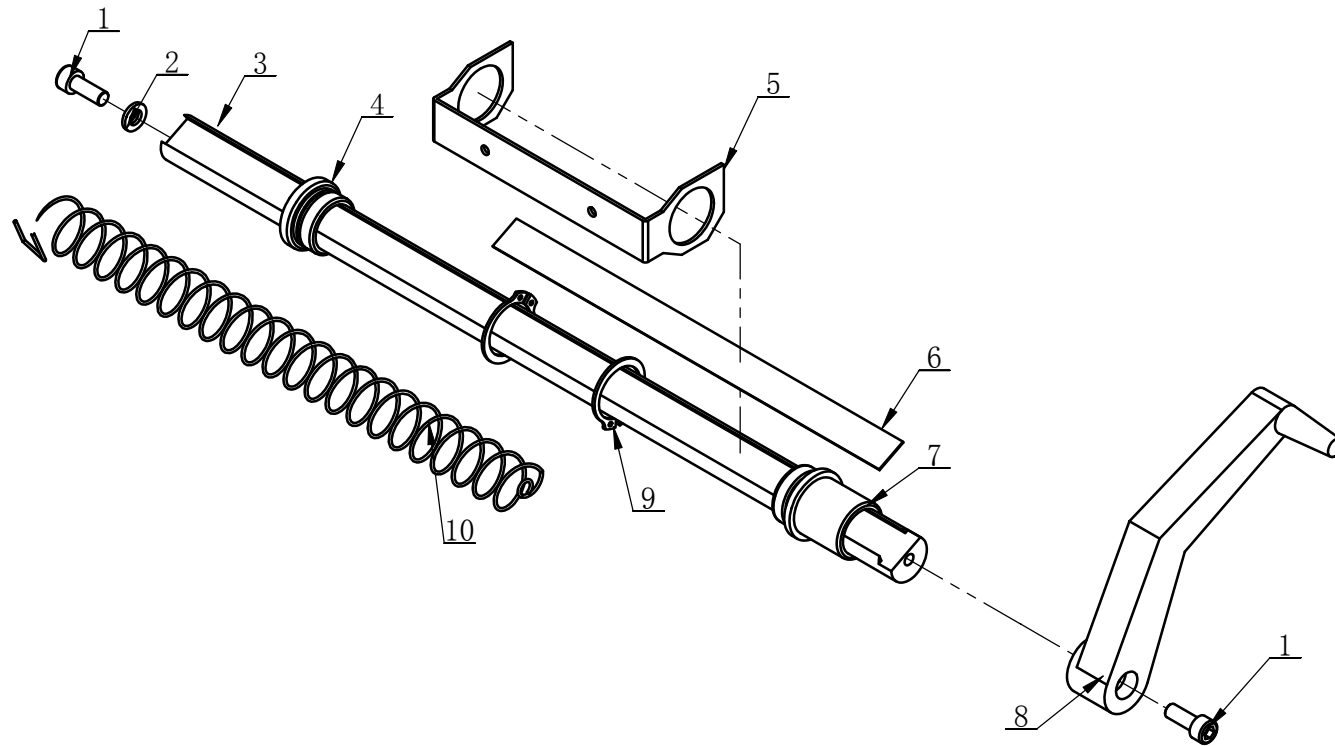
ITEM	QTY.	PART NO.	DESCRIPTION.	ITEM	QTY.	PART NO.	DESCRIPTION.
1	1	6008588	BODY	39	3	5008030	SCREWS M4×10
2	4	5004020	BOLT M10X25	40	1	6008845	SUPPORT PLATE
3	8	5010006	WASHER 10	41	2	5008030	SCREW M4×10
4	8	5004221	WASHER 10	42	1	6008843	RADIATOR FIN
5	1	6008518	BALANCING SHAFT ASSEMBLY	43	5	5010065	SCREW M3X10
6	1	6008571	FRONT RETAINING PLATE	44	1	5508206	POWER CABLE
7	2	5008050	SCREW M5×8	45	6	5508003	PLASTIC CLIPPER
8	1	5508002	WEDGE BELT (940mm)	46	1	5509012	POWER SUPPLY BOARD
9	1	5008009	SCREW M6×10	47	1	5508004	UNIVERSAL RESISTOR
10	5	5010058	WASHER 6	48	1	5508022	INSULATION WASHER
11	5	5000007	WASHER 6	49	1	5508029	RESISTANCE CLAMP
12	4	5010077	BOLT M8X20-N	50	1	6008851	COMPUTER BOARD
13	4	5004046	WASHER 8	51	2	5008008	SCREW M5×12
14	4	6008576	NON-STANDARD WASHER Φ8	52	1	6008517	SCALE ASSEMBLY
15	1	6008503	MOTOR BELT PULLEY	53	2	5508006	CONE HANG HANDLE
16	1	6008566	MOTOR SEAT	54	1	5502046	STOP-UP
17	4	5009015	SCREW M6X16	55	1	5508007	POWER SWITCH
18	1	5508001	MOTER (220v)	56	1	6008090	SUPPORT PLATE
19	1	6008570	CONNECTING PLATE	57	4	5509082	WEIGHT SANDBAG
20	1	6008567	PROTECTIVE HOOD SUPPORT	58	1	5508072	CB910 WEIGHT TRAY
21	4	5008071	SCREW M10X35	59	1	5509092	DISPALY BOARD
22	1	5508058	PROTECTIVE HOOD SPRING	60	1	5509093	PANEL
23	1	5008049	BOLT M6X40	61	21	5008026	NUT M3
24	1	5007001	NUT M6	62	17	5000079	WASHER 3
25	1	5008001	NON-STANDARD WASHER Φ11	63	19	5010214	WASHER 3
26	1	5006008	SCREWS M10X20-N	64	4	5008053	SCREW M3X25
27	2	5010066	SCREW M4X30	65	4	5008052	SCREW M3X16
28	9	5000068	WASHER 4	66	1	5509054	PROTECTIVE WIRING
29	9	5010040	WASHER 4	67	1	5509094	PANEL WIRING
30	1	5508009	STROLE SWITCH	68	1	5509089	PHOTOCELL BOARD CONNECTION LINE
31	1	6008586	PROTECTIVE PLATE	69	1	5509095	MAIN BOARD CONNECTION LINE
32	2	5010235	SCREW M4X12	70	1	5508060	SWITCH CONNECTION LINE
33	1	5508073	PROTECTIVE COVER A TYPE	71	1	5509096	DISPLAY PANEL CABLE
34	4	5008003	SCREW ST5. 5X25	72	1	6008900	ACCESSORY
35	1	6008568	PROTECTIVE HOOD SUPPORTT				
36	1	5508067	BALANCER CIRCULAR WIRE PLUG				
37	1	5508011	DRAG RESISTANCE DEVICE				
38	1	5508005	TRANSFORMER 220V				

B-P.01.00.00A

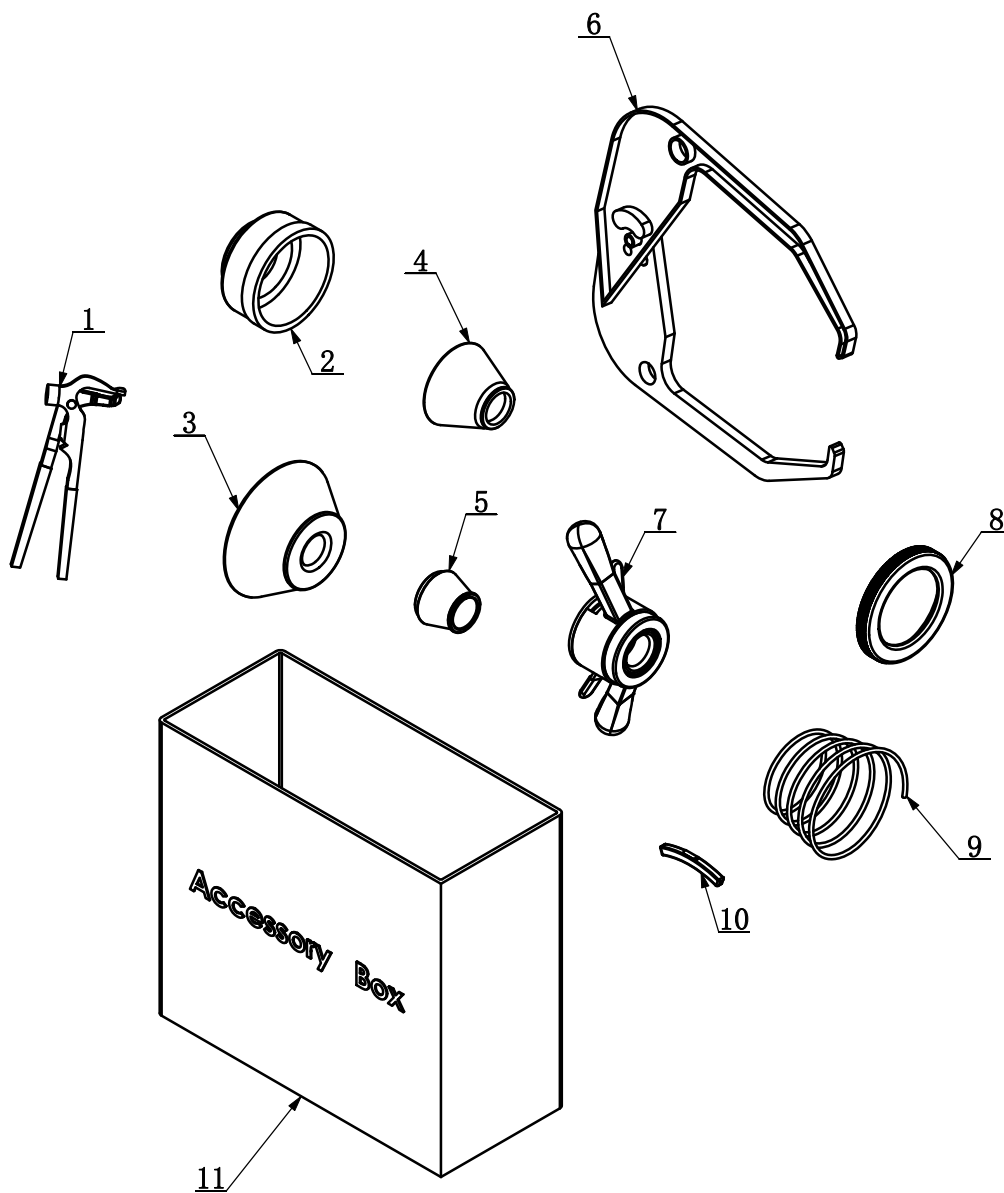


ITEM	QTY.	PART NO.	DESCRIPTION.	ITEM	QTY.	PART NO.	DESCRIPTION.
1	1	6008526	FIXING SHAFT WELDING	17	1	6008528	BEARING PRESS HOUSING
2	1	6008533	FULL BOTTON SCREW	18	4	5002059	SCREW M5X16-N
3	2	5508040	SENSOR	19	1	6008531	PHOTOELECTRIC SET
4	2	6008530	PRESSING WASHER	20	6	5008002	SCREW M4×8
5	1	6008553	FLYING RINGS SCREW	21	6	5000068	WASHER 4
6	5	5004221	WASHER 10	22	5	5010040	WASHER 4
7	3	5010006	WASHER 10	23	2	5010214	WASHER 3
8	5	5008004	NUT M10	24	2	5000079	WASHER 3
9	1	6008524	PHOTOELECTRIC TOOTH	25	2	5008026	NUT M3
10	1	5002023	RINGS CSB 33	26	2	5000078	SCREW M3×8
11	1	5002030	CIRCLIP 25	27	1	6008525	PHOTOELECTRIC CELL PLATE
12	1	6008527	MAIN SHAFT WELDING	28	1	5508041	ANGLE SENSOR-00.11.034
13	1	6008529	LEADING SCREW				
14	1	5008029	SCREW M10×160				
15	1	5008024	BALL BEARING 6005				
16	1	5008028	BALL BEARING 6006				

B-L.01.00



ITEM	QTY.	PART NO.	DESCRIPTION.
1	2	5009015	SCREW M6X16
2	1	5000007	WASHER 6
3	1	6008522	SCALE ROD
4	1	5508037	HARNESS
5	1	6008523	SCALE HANDLE
6	1	5508039	SCALE
7	1	5508038	HARNESS
8	1	5508036	SCALE HANDLE
9	2	5002030	CIRCLIP 25
10	1	5508035	SPRING



ITEM	QTY.	PART NO.	DESCRIPTION.
1	1	5508068	BALANCE HAMMAR
2	1	5508026	BOWL
3	1	6008536	LARGE CONE
4	1	6008535	MIDDLE CONE
5	1	6008534	SMALL1 CONE
6	1	5508032	CALIPER ASSEMBLY
7	1	5508023	QUICK NUT (Φ 36)
8	1	5508027	BOWL EDGE
9	1	5508025	SPRING
10	1	5508024	WEIGHT (100g)
11	1	5508069	ACCESSORY BOX